



TAN CANG
CAI MEP THI VAI TERMINAL

Bà Rịa Vũng Tàu, May 29, 2019

A WARM WELCOME TO TC-CMTV
TERMINAL



ĐẾN VỚI TÂN CẢNG SÀI GÒN, ĐẾN VỚI CHẤT LƯỢNG DỊCH VỤ HÀNG ĐẦU
COME TO SAIGON NEWPORT, COME TO THE BEST QUALITY SERVICES



I. Introduction to TCTT and the its connections

1. Name and Location
2. Cai Mep-thi Vai Area – Industrial Zones
3. Cai Mep-thi Vai Area – Port Operators
4. Cai Mep-thi Vai Area – ICDs and SNP Terminals
5. Cai Mep-thi Vai Area – West of Ho Chi Minh City
6. Cai Mep-thi Vai Area – Across Vietnam

II. TCTT business activities

1. Terminal Operation
2. Facilities and Equipments
3. Advantages of TCTT



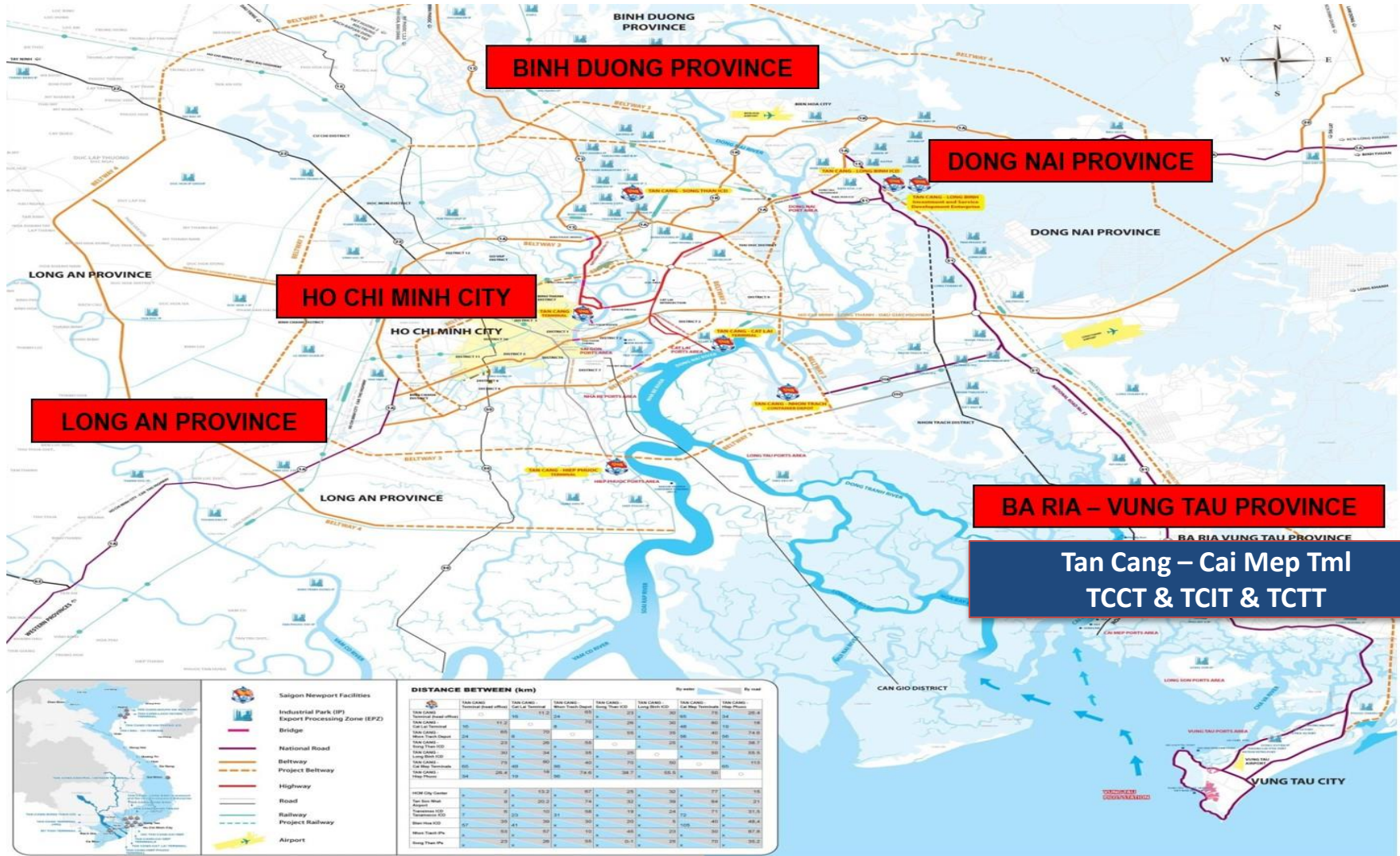
Name and Location

- Vietnamese name: CÔNG TY TNHH MTV CẢNG TÂN CẢNG - CÁI MÉP THỊ VÀI.
- English name: TAN CANG - CAIMEP THIVAI TERMINAL ONE-MEMBER LLC.
- Trading name: CÔNG TY TNHH MTV CẢNG TÂN CẢNG - CÁI MÉP THỊ VÀI
- Abbreviation: TCTT.

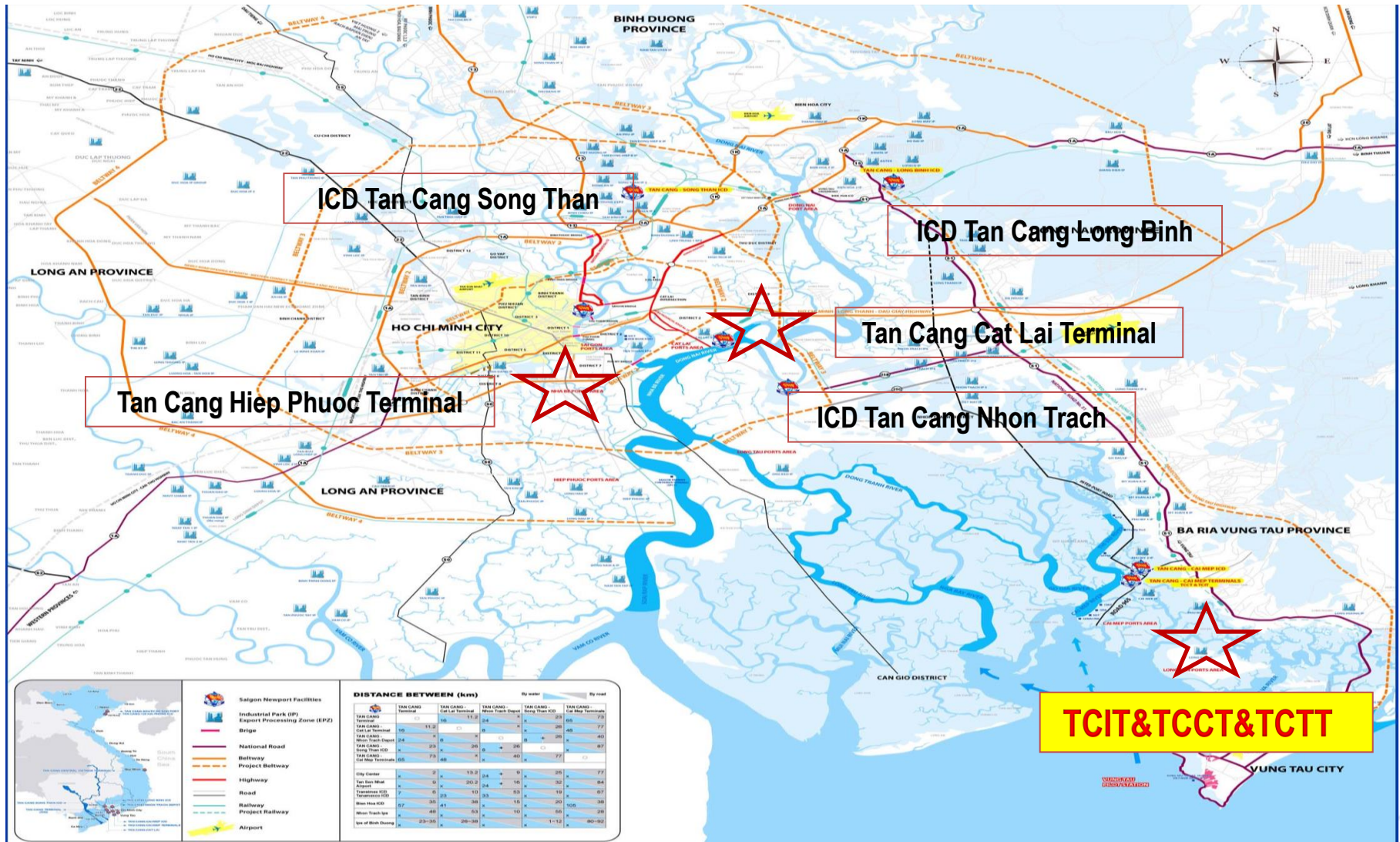
- Phuoc Hoa Commune – Phu My Town – Ba Ria Vung Tau Province.
- On Cai Mep – Thi Vai channel, near Ganh Rai bay.
- Distance of 14.09 knot from Zero pilot buoy.



Cai Mep-Thi Vai Area – Industrial Zones



TCTT's Area Connection – ICDs and SNP Terminals



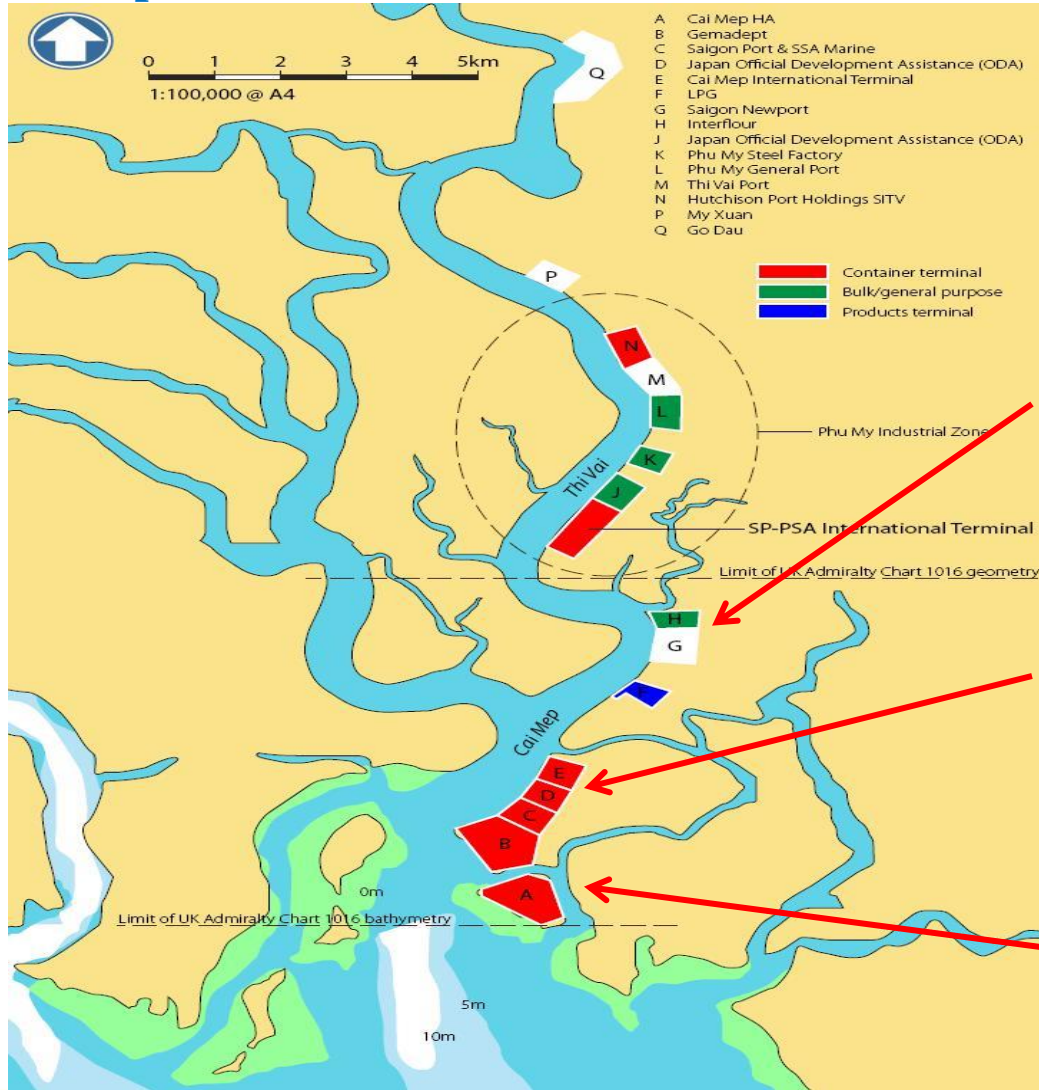
Cai Mep-Thi Vai Area – Port Operators



Abbr	Terminal	Number of Services
N	SITV	0
I	SP-PSA	0
G	TCIT	8
E	CMIT	5
D	TCTT	6
C	SSIT	4
B	Germalink	Constructing
A	Cai Mep Downstream	

Cai Mep-Thi Vai Area

Port Operators



Abbr	Terminal	Draft	Time Operation
N	SITV	12 m	7/2010
I	SP-PSA	12 m	6/2009
G	TCCT (SNP)	14 m	6/2009
G	TCIT (SNP)	14 m	01/2011
E	CMIT	16 m	04/2011
D	TCTT (SNP)	16 m	First Quarter 2014
C	SSIT	16 m	06/2018 (started doing container)
B	Germalink	16 m	Constructing
A	Cai Mep Downstream	20 m	

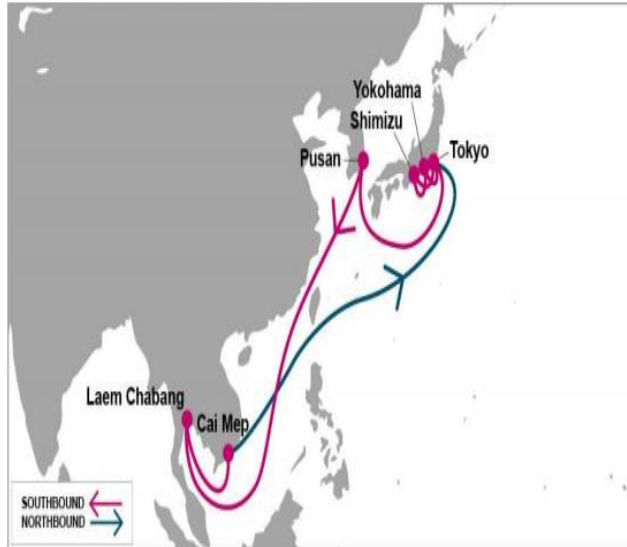
Business Activities



TAN CANG
CAI MEP THI VAI TERMINAL

JTV 1 – SERVICE OF OCEAN NETWORK EXPRESS

JTV1: Japan Thailand Vietnam 1



PORT ROTATION

(Terminals are subject to change)

ORIGIN	ETA/ETD	TERMINAL
Shimizu	FR/SAT	Shimizu Port
Yokohama	SAT/SUN	Honmoku D-4/5
Tokyo	SUN/SUN	Ohi No.3-4 Terminal
Pusan	TUE/WED	Pusan New Port
Laem Chabang	MON/WED	Hutchison Laem Chabang Terminal (HLT)
Cai Mep	FR/IFRI	TAN CANG – CAI MEP THI VAI TERMINAL
Tokyo	THU/IFRI	Ohi No.3-4 Terminal
Shimizu	FR/SAT	Shimizu Port
Turnaround days:	21	

Weekly/Fixed Day Service

- **Rotation:** TYO – PUS – LCH – **TCTT** – TYO – SMZ – YOK
- **T/S time:** 6 ports, 21 days, vessel capacity: 4 vessels x 4460 TEUs, LOA: 260m

JTV 1 – OCEAN NETWORK EXPRESS
Calling at TCTT on April 06,2018

ONE
OCEAN NETWORK EXPRESS

TPV – SERVICE OF OCEAN NETWORK EXPRESS



East Asia

TPV: Thailand Philippines Vietnam



KEY TRANSIT TABLE

	EB	CMP	MNL	SGN	WB	SGN	LCH
LCH	2	5	10		MNL	3	6
CMP		2	7		SGN		2

PORT ROTATION

(Terminals are subject to change)

ORIGIN	ETA/ETD	TERMINAL
Laem Chabang	SUN/MON	Hutchison Laem Chabang Terminal (HLT)
Cai Mep	WED/THU	Ten Ceng-Cai Mep Thi Vai Terminal
Manila	SAT/MON	Manila International Container Terminal
Ho Chi Minh	THU/FRI	HCM Tan Cang - Hiep Phuoc
Laem Chabang	SUN/MON	Hutchison Laem Chabang Terminal (HLT)

Turnaround days: 14

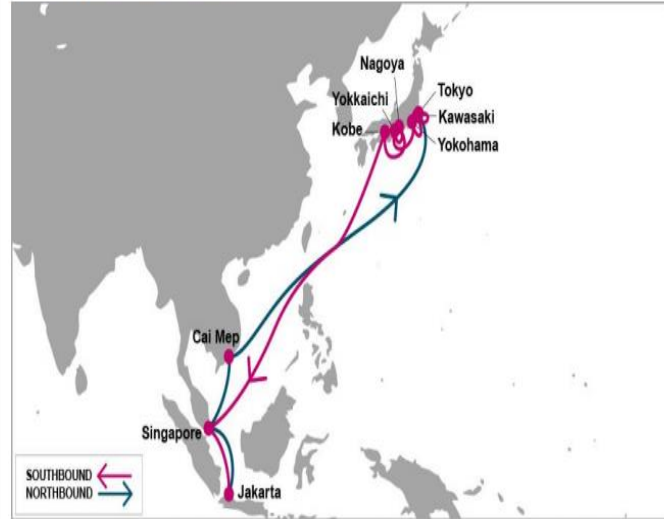
Weekly/Fixed Day Service

- **Rotation:** Laem Chabang – Cai Mep – Manila – Ho Chi Minh – Laem Chabang
- **T/S time:** 5 ports, 14 days



JID – SERVICE OF OCEAN NETWORK EXPRESS

JID: Japan Indonesia



PORT ROTATION

(Terminals are subject to change)

ORIGIN	ETA/ETD	TERMINAL
Tokyo	SAT/SUN	Ohi No.6-7 Terminal
Kawasaki	SUN/SUN	Kawasaki Terminal
Yokohama	SUN/MON	*Daikoku C-4
Yokkaichi	MON/MON	Yokkaichi Kasumigaura Kita Futo
Nagoya	TUE/TUE	*Nagoya Container Berth
Kobe	WED/WED	Rokko Island C-6/7
Singapore	WED/THU	PSA Singapore
Jakarta	FRI/MON	New Priok Container Terminal One (NPCT1)
Singapore	TUE/THU	PSA Singapore
Cai Mep	SAT/SUN	Tan Cang-Cai Mep Thi Vai Terminal

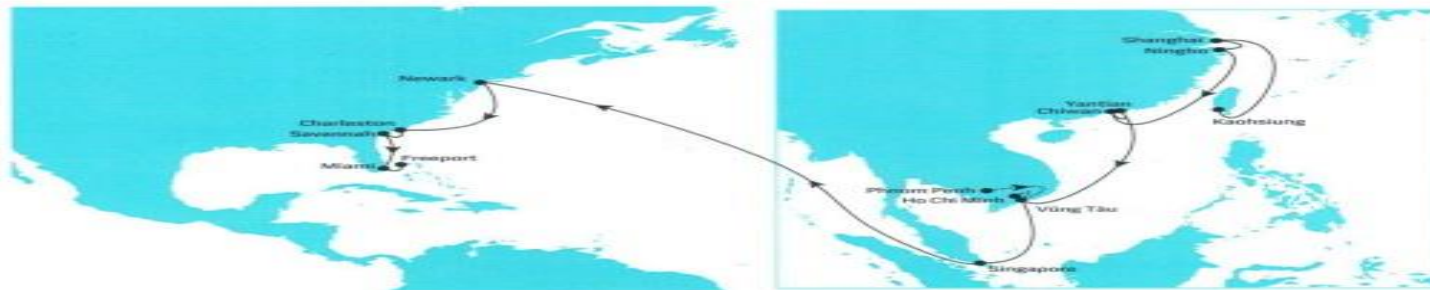
- **Rotation:** TYO – KWK – YOK – YKK – NGO – UKB – SIN – JKT – SIN – **TCTT** – TYO
- **T/S time:** 9 ports, 28 days, vessel capacity: 4 vessels x 4649 TEUs, LOA: 267m

JID – OCEAN NETWORK EXPRESS
Calling at TCTT on April 14, 2018

ONE
OCEAN NETWORK EXPRESS

TP17 – SERVICE OF 2M + HMM + ZIM

TP11 EASTBOUND



SERVICE HIGHLIGHTS

- The only direct product from Yantian, Vung Tau and Singapore to Miami
- Fastest transit times into Newark and Charleston from Vietnam and competitive transit time to Savannah
- Best connectivity from Phnom Penh to Newark with a transit time of 28 days

1- Service Rotation and Transit Time:

Port of Loading	Port of Discharge			
	Newark	Charleston	Savannah	Miami
Vung Tau	25	28	29	32
Ho Chi Minh	26	29	30	33
Phnom Penh	28	31	32	35

Transit times are indicative and subject to change

2- Cut-offs:

Place of Receipt	CY Cut-off	Shipping Instruction Cut-off	Bill Amendment Cut-off
Tan Cang Cai Mep Thi Vai Terminal	Fri 05:30	Wed 11:59	Wed 23:59
Cat Lai Port, ICD Transimex, ICD Tanamexco	Thu 12:30	Wed 11:59	Wed 23:59
Phnom Penh Port	Mon 12:00	Wed 11:59	Wed 23:59
Dong Nai Port	Thu 10:30	Wed 11:59	Wed 23:59

TP17 – 2M + HMM
 Calling at TCTT on April 15, 2016



USEC2/AWE4 – SERVICE OF COSCO/OOCL



- **Rotation:** TCTT - HONGKONG - YANTIAN - XIAMEN - SHANGHAI - COLON - NEWYORK - SAVANNAH - CHARLESTON



AEU7 – SERVICE OF COSCO/CMA

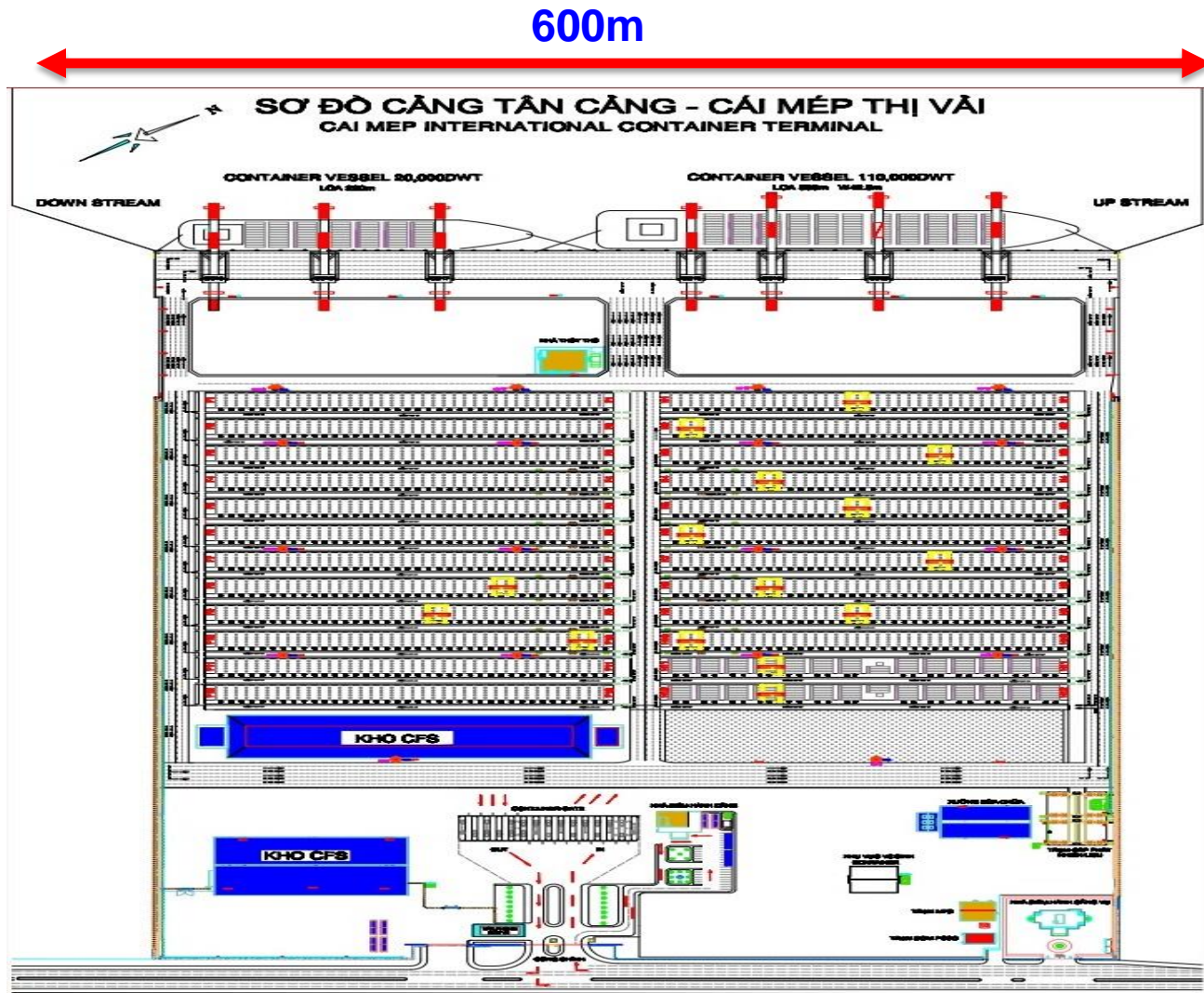


- **Rotation:** Ningbo – Shanghai – Hong Kong – Nansha – Shekou – Port Klang – Piraeus – Antwerp – Hamburg – Rotterdam – Felixstowe – Southampton – Piraeus – Singapore – Hong Kong – Ningbo.



Port Layout

Area	48ha
Berth	600m
Plug	486
Equip	05 STS, 15RTG, 30 trucks
Vessel	160.000DWT
Capa	1.000.000
Co.	LTD
Built	2011
Oper.	2014



Statistics

1. Wharf:

- Type of wharf : piled construction
- Total length of wharf : 600 m
- Number of berth : 02
- Berth depth alongside: 16.1m below CDL
- Width of apron : 55 m
- Crown height : +5m above CDL
- Height water line(HWL) : + 3.97 m
- Low water line (LWL) : +0.58 m
- CDL (Chart datum line) : ± 0 m
- Width of channel : 310 m.
- Radius of vessel turning basin : 400m

2. **Size ship:** Up to 160,000 DWT.

3. **Max Capacity:** 1,000,000 TEUs/year.



Equipment

- **Quay Crane** : 05 units:
 - 2 units with:
 - Twin lift spreader 2x20 feet ISO container
 - Rated Load under spreader: 50T
 - Out reach: 51m
 - Back reach: 15 m
 - Rail gauge: 30m
 - Lift height above rail: 40m
 - Lifting height under rail: -15m.
 - Productivity : 25-30 moves/hr.



Equipment

- RTG 6+1: 15 units (Lifting capacity: 41T)
- Reach stacker : 01 units (45T)
- Trailer : 30 units with towing force : 65T
- Referee plug: 486 units.



Facility

CONTAINER GATE:

- 14 lanes : 09 gate in + 05 gate out.
- 03 bridge weight 80T .



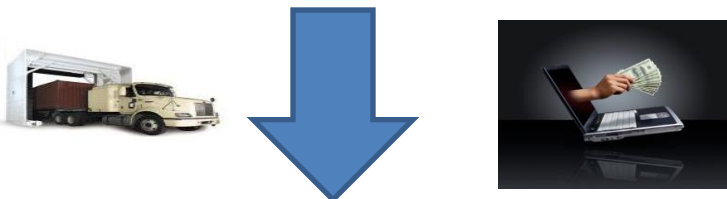
Advantages

TECHNOLOGY: Operate with the most modern software

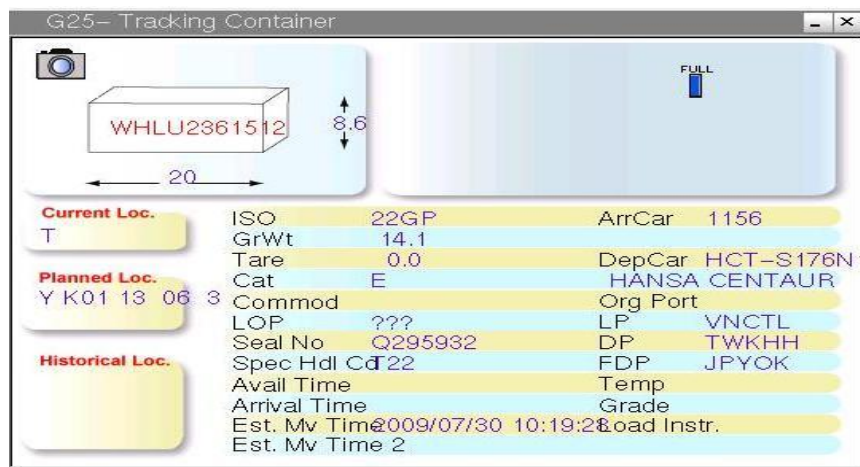
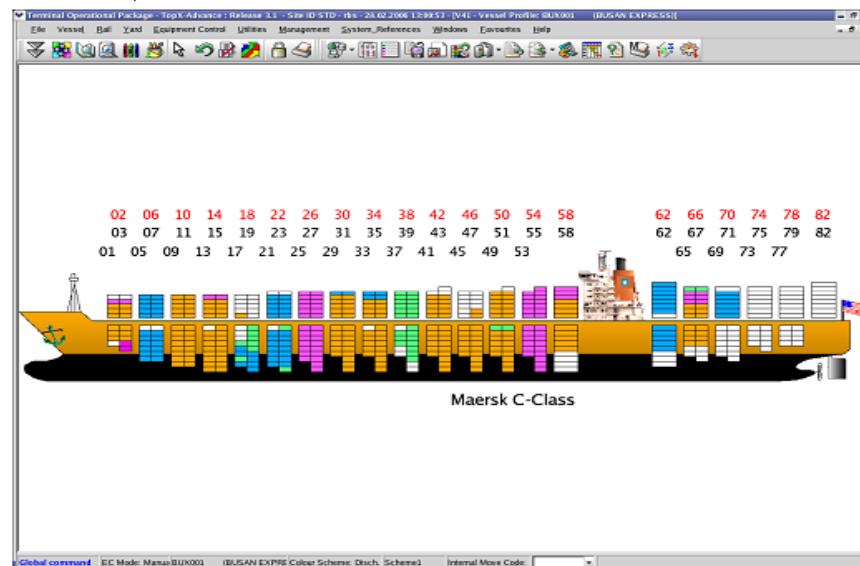
- **TOPX** (Terminal Operation Package System) –by RBS (Australia).

- **Functions:**

- Automatic in vessel planning and container yard.
- Container handling's equipment distribution.
- Real time in reporting container location
- Use of wireless devices/hand-held/DGPS



- Integration with e-custom
- Custom declaration via the internet
- Port/Vessel Line connection via EDI
- Association with radiation inspection system for cargos through terminal
- Association with e-banking
- Time, cost saving and risk minimization



Ready to call vessel up to 160.000 DWT



Connection with Cat Lai Terminal



Waterway Connection



SOTRANS



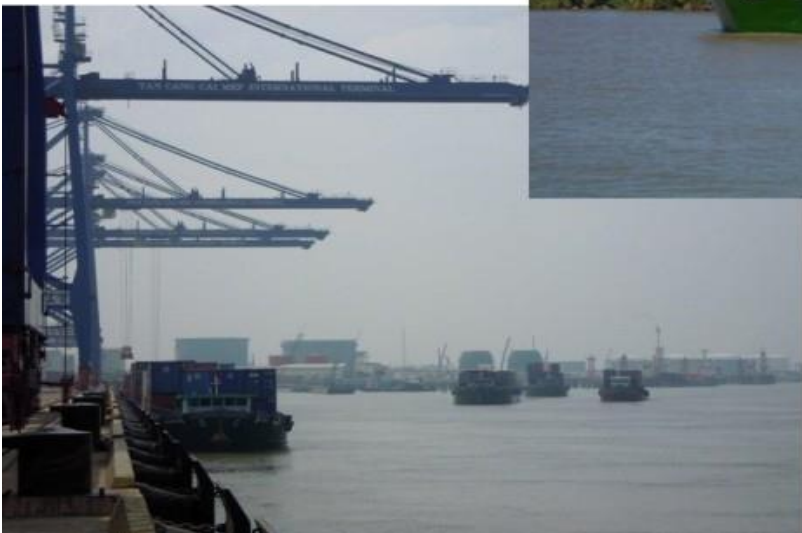
PHUC LONG ICD



TANAMEXCO

Dong Nai Port

BINH DUONG PORT



85% Containers are transported by Barge from/ to Cat Lai, HCM, Đồng Nai, Bình Dương Ports and ICDs



Transport time: 3-5 hours





THANK YOU



TAN CANG
CAI MEP THI VAI TERMINAL